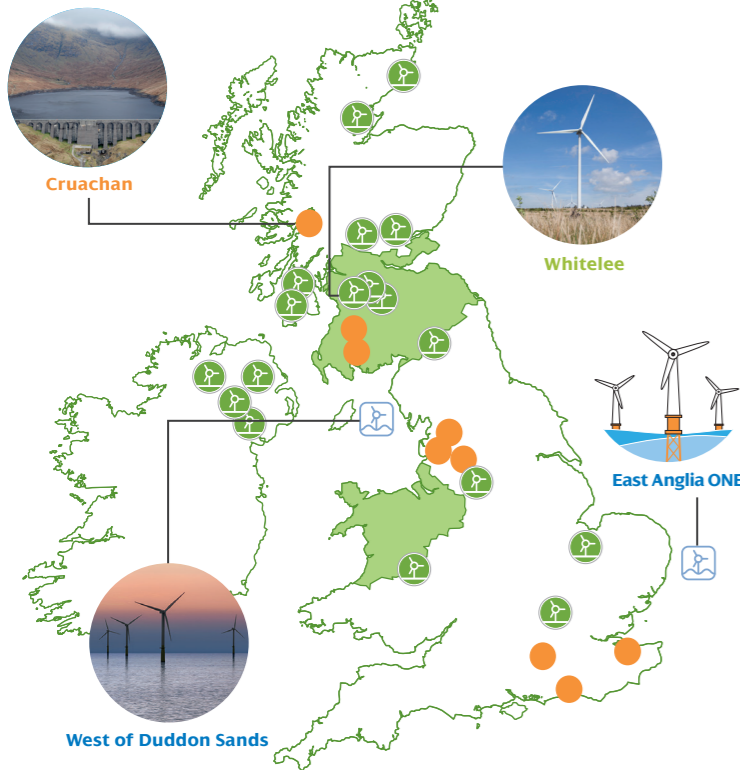


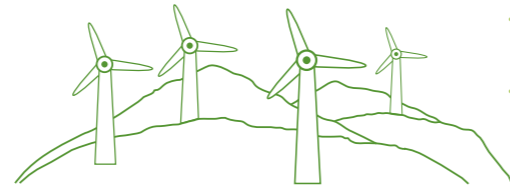
Operating UK wide

- Power Stations - gas and hydro
- Onshore windfarms
- Offshore windfarms
- Distribution Networks



Making clean energy work for you

Onshore - delivering low carbon energy



Whitelee - UK's largest onshore windfarm

- **215** turbines, enough green energy for **300,000** homes
- Our **4** star Visitor Centre has welcomed over **500,000** people and is playing a big part in the community

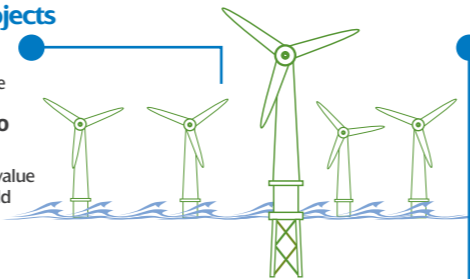
Our 2,000 Megawatt target on track

- **31** operational windfarm sites producing over **1,600** megawatts enough to serve **740,000** homes
- A further **6** onshore windfarms in construction, we're on target to add an additional **450** megawatts to the portfolio during 2016-17

Offshore - growth projects

East Anglia ONE

- This **£2.5bn** project will utilise **102, 7MW** Siemens turbines powering more than **500,000** homes every year
- When built, it will be the best value offshore windfarm in the world



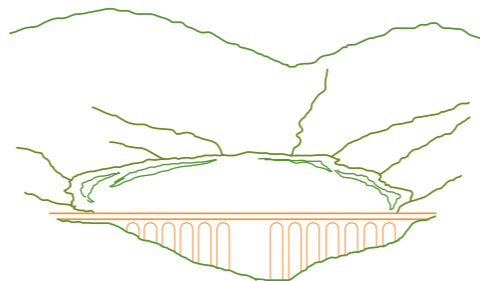
Wikingen

- First foundations laid for this **70 turbine 350** megawatt project off the coast of Germany
- At **€1.4bn**, it is our single largest investment this decade
- This project will create benefits across the entire supply chain and support hundreds of long-term highly skilled jobs

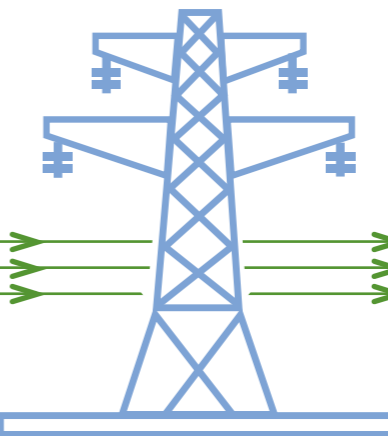
Pump Storage - Cruachan

A cleaner way to meet peak demand

- Pump Storage hydro is a major asset for electricity generation worldwide
- As simple as turning on a tap, Cruachan can currently generate **440** megawatts in **30** seconds
- We believe we could develop between **400 - 600** megawatts of additional capacity with an investment of between **£300 - £400** million

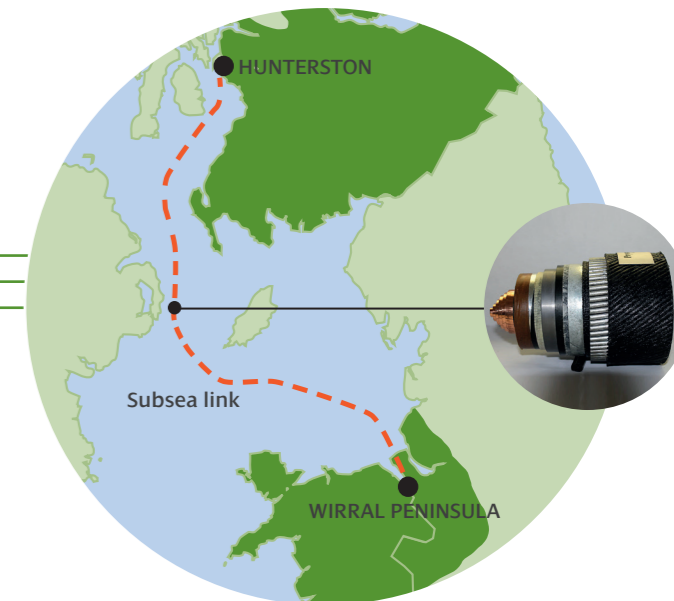


Industry changing infrastructure projects



- Most ambitious upgrades to the electricity network for more than half a century
- Now in 4th year of **£2.6bn** RIIO T1 Transmission investment (2013-2021)
- First year completed of **£4.4bn** RIIO ED1 Distribution investment (2015-2023)
- Delivering industry leading reconnection times during severe weather incidents

Security of supply - HVDC Subsea link



Our team continues to build the first ever bi-directional cable that will secure power use for the whole of the UK, allowing electricity to flow north or south and taking low carbon energy to where it is needed.

- **£1.3bn** investment, part of RIIO T1
- More than **380km** of subsea interconnector cables
- Providing an additional **2,200MW** of capacity
- Employing **450** employees and contractors
- Operational 2017